

Historic, Archive Document

Do not assume content reflects current scientific knowledge, policies, or practices.





62.03

APR 5 1942
U.S. DEPARTMENT OF AGRICULTURE

*Fuchsias
and
Tuberous
Begonias*

1942

**BUNGALOW
NURSERY**
HILLSIDE BOULEVARD
COLMA, CALIFORNIA

INSIDE VIEW OF OUR HALL OF FLOWERS

Again... The Bungalow Nursery Leads...

Leads in the renaissance of fuchsia popularity, offering as even before the great wave of appreciation the finest old and new varieties.

Leads now by introducing at every season the most outstanding novelties produced by our famous hybridisers.

Leads in properly propagated quality stock in endless varieties of application to specimen plants.

Leads as ever before and after our great success in the San Francisco Exposition in basket varieties, plants of unexcelled size and beauty.

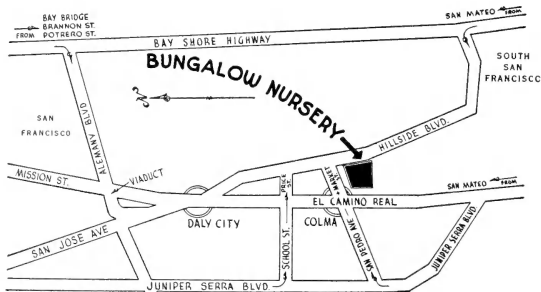
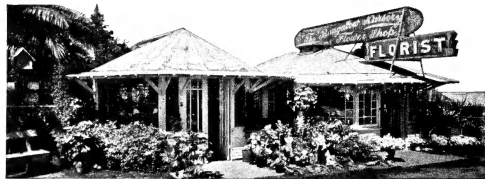
Leads in satisfying patrons by offering good values . . . plants as low as 35 cents.

Leads your way to our Hall of Flowers on Hillside Blvd. in Colma, near San Francisco, where you may profitably select your plants and avoid shipping expenses.

Phone RAndolph 3718

H. Werle, Prop.

THE BUNGALOW NURSERY & FLOWER SHOP



New Fuchsia Introductions

From the G. Niederholzer and from the Victor Reiter experimental gardens come the following novelties for 1942 introductions. We have in the past found every new variety from these sources of great merit and with confidential pride recommend this new assortment of fuchsia hybrids. Advance orders for Spring deliveries will be accepted now. All orders filled in rotation.

America (Niederholzer). An incomparable novelty, very thin long tube white at the base, gradually changing to rose madder on the outside of sepals, solid crimson on the underside. The single corolla is dark tryrian rose, pistil and stamens are extra long.

Lindissima (Niederholzer). Seemingly the greatest double hanging variety; a beautiful blending of rose and mauve in flowers of perfect shape and immense size. A luxurious bloomer and fast grower.

Cora Brandt (Niederholzer). A flower of a new shade in red, fine shape, vigorous growth and fine foliage. The very thick tube and wide spread sepals are solid crimson; the wide open corolla is rose-madder, tinged with geranium lake; the anthers are cyclamen blue.

Flamenco (Niederholzer). Unique in shape, tube and bud very long and slender; very narrow and extra long sepals in bizarre and spidery spread. Single, almost self rose pink. Stiff but slender long branches.

Excelsior (Niederholzer). Beautiful coloring

and design on inside of wide open single corolla makes this one remarkable. Brilliant royal purple with carmine design in center. Short red tube and sepals. Semi-stiff branches, moderately floriferous.

La Paloma (Niederholzer). Another one of the precious Rolla Hybrids of distinct character. Single white corolla with fine pink lines; beautiful solid pale pink inside of sepals, lighter outside; perfect and graceful shape. Strong pale pink stamens and anthers, long pistil. Vigorous growth producing masses of flowers.

Seraphine (Niederholzer). A truly sensational novelty, distinctly different. Large single wide spread corolla of dark cyclamen purple. Upright sepals of phlox pink color. Long stamens, maroon anthers, long style with yellow stigma.

Bolero (Niederholzer). Well shaped large double with dark imperial purple corolla and leathery red sepals. Stiff branches and good foliage. Superior to many others in this line. A good bloomer for a long season.

Super Colossal (Niederholzer). Is said to

be the largest of all the double purples. Especially valuable for its extraordinary mass production of flowers. May be used for baskets by a little coaxing.



Victory (Reiter, Sr.). The flower is long semi-double resembling a very refined Pride of Exeter. The sepals are exceptionally long and recurved and the corolla is of a fine long incurved globular form. The elegant semi-double corolla is of solid rose madder and the glistening sepals are carmine. The



large flower appears as a crimson self with an elegance of form and an evenness of color lacking in Pride of Exeter.

Melody (Reiter, Sr.). This is a perfectly shaped single of good size in the much desired pastel shades. Although the flower is larger and more perfect, it resembles Cascade in form but its coloring fits closely into the Treasure Island-Pastel group. The corolla is pale cyclamen purple and the recurved sepals are pale Neyron rose. The

habit is strong self branching with fine bright green foliage. An especially good doer.

Butterfly (Reiter, Sr.). A fine large single self with recurved sepals and spreading corolla. Very similar to Muriel but of improved form and finer more even color. The corolla is rose Bengal and the sepals and the base of the corolla are crimson. The foliage is light green; the habit is trailing. Vigor is medium.

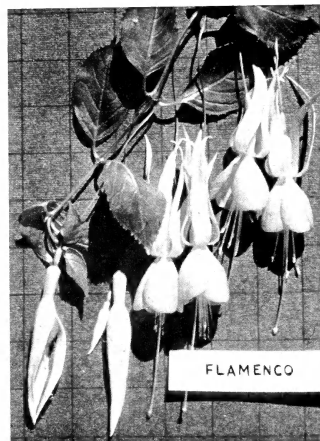
Mariposa (Reiter, Sr.). A trailer with very long thin flowers. The 2½-inch flower has a long tube and recurved sepals of satiny scarlet fusing to geranium lake at the base of the sepals. The corolla is dark carmine changing to geranium lake as it joins the sepals. The branches are long and drooping and the flowers are borne in pendulous profusion.

Sunrise (Reiter, Sr.). A shrubby stiffly upright plant with single flowers of a delightfully delicate new coloring. Tube and sepals are white flushed rose with the sepals tipped crimson. The single corolla is of the clearest scarlet. The plant is strong, free blooming and quite sun resistant. Foliage is of medium size, of thick substance and of good color.

Rocket (Reiter, Sr.). A new break in the *F. triphylla* group. The flowers resemble Leverkusen in form but they are carried in

terminal clusters as in typical *F. triphylla*. The clustered tubular flowers are 2 inches long and somewhat inflated. The tube and sepals are turkey red and the tiny corolla is poppy red. The ruddy foliage is large, deeply veined and slightly tomentose.

The above new introductions are available in 2½-inch pots for 60c each or three for \$1.50.



Hanging Basket Fuchsias may be used on porches and walls, in conservatories and solariums. They lend themselves to floral decoration and in gardens may be used in trees. Hanging Basket varieties are floriferous and bloom all year long.

For a number of years we have made a specialty of the Hanging Basket type of Fuchsia and as a result, we now have the largest collection and most complete listing.

Amelia Auban, Annie Earle, Balkon, Betty, Butterfly, Cascade, Claret Cup, Falling Stars, Halloween, Henri Poincare, High Evans, Lindissima, Marinka, Mariposa, Molesworth, Mrs. Rundle, Mrs. Victor Reiter, Mrs. W. H. Ware, Muriel, Nonpareil, Pastel, Pee-Wee Rose, Princesita, San Francisco, Trailing Queen, Treasure Island, Wistaria. For description see general alphabetical list.

* * *

Alsace, dbl. Tall plant with large flowers. Scarlet calyx and white corolla slightly flushed with rose.

Amelia Auban, sgl. Long white tube and sepals, bright cerise corolla. Branches weak, may be trained for basket, a good variety among the large number in this class.

Annie Earle, sgl. Tube and sepals waxy white very lightly shaded pink, corolla deep pink shaded orange. A basket variety.

Arborescens. A Mexican species. Quite distinct, resembling lilac, forming well-shaped

trees by pruning; a fine variety for large-scale landscaping. Large, dark green foliage, early flowering.

Aurora Superba, sgl. One of the very finest among the orange-colored red; long pink calyx, green tipped sepals, and large red-orange corolla. Branches weak, should be trained to upright growth.

Aviator, sgl. One of the best among the red and white singles. Fairly large flowers on upright up to 7-foot plant; will stand considerable sun.

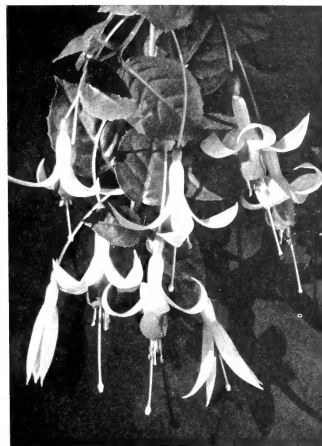
Ballerina (Niederholzer), sgl. An extremely profuse bloomer over 6 feet high, with fine foliage, ivory pink tube and long sepals, clear pink corolla with rose edges. Medium large flowers of fine shape.

Beauty of Swanley, (Villa Hebe) sgl. Should be in every collection. A well-growing plant with long, white tubed flowers but a very distinct pale orchid corolla.

Betty, sdbl. Small trailing. Tube and sepals rose-red, corolla rich, creamy-white veined rose-red.

Beverly Hills. Considered by many to be one of the finest of the new single varieties. The corolla of the flower is an entrancing shade of burgundy red. The sepals are glowing pink, striped with white.

Black Princess (Niederholzer). 8 feet high,



Princesita

gracefully arching branches, very floriferous, the darkest and largest single wide open deep purple corolla and red sepals.

Blue Moon (Niederholzer), dbl., sdbl. Praised for its beautiful, nearest to true blue, semi-double, well-shaped corolla, backed by long, bright red sepals on short tube. A very rich bloomer growing to 6 feet high.

Boliviana. A species from Brazil and Bolivia. Unique by its very large, long clusters of



Mrs. Rundle—Hanging Basket Variety

red flowers turning into very decorative dark red bead-like berries. Will stand a good deal of sun.

Brentwood (Evans & Reeves), dbl., sdbl. Dwarf pure white if grown in deep shade, but with tinge of pink in some sun.

California, sgl. Tall, vigorous grower, light green foliage, flowers with bright orange corolla and coral pink calyx. One of the tallest and one of the best to make trees.

Cascade (Dr. Lagan), sgl. One of the finest trailers with masses of large flowers, long, pointed buds, pale carmine sepals and deep carmine corolla. The Exposition flower filling large urns in arcades of courts.

Claire de Lune. Broad leaves similar to Monterey. Long, narrow blooms of salmon-orange, corolla flaring out at the end.

Claret Cup (Dr. Lagan), sgl. A sister of Cascade and Halloween. Has been grown and admired in a few places and deserves special introduction. Very large flowers with pale carmine sepals and corolla of Rose Bengal. We use this variety for baskets with good results.

Conchilla (Niederholzer). All globular, all curved, short semi-double amethyst violet corolla, changing to rhodamine purple, petals shell-like curved, sepals fully rolled up.

Corymbiflora Alba. A species from Peru. Tall growing shrub with clusters of flowers with long, thin white tube and sepals and short, deep red corolla.

Countess of Aberdeen (Schneewitchen), sgl. A little treasure decidedly different, small plant with medium small fine flowers of ivory pink calyx and darker pink corolla.

Curly Wurly (Niederholzer). A very strong upright plant with an abundance of flowers.

The turkey-red sepals are oddly curled and whorled, with a fine bell-shaped single corolla, very dark violet-purple, lighter at the base with brilliant red streaks. A really desirable single red and purple, superior to a great many of this type.

Display (Prince Charming), sgl. A medium small plant of very good character, flowers of clear pink almost self with wide open corolla, well shaped. One of the good old varieties.

Elfin (Niederholzer). A charming little sprite most delicate in color, shape and texture, very floriferous, sepals faintly pink, single corolla pure white with faint carmine lines, extra long pistil and dark red anthers.

Elsa, sdbl. Well shaped, large flowers, with ivory-pink calyx and rose-purple corolla; upright, 3 feet.

Escallopia (Niederholzer). Brilliant red tube and sepals, single corolla of intense violet purple, petals are deeply scalloped giving a uniquely shaped flower.

Estrella (Niederholzer). A star among the large single well shaped red and purples, one of the best in every way, strong upright grower with a multitude of flowers.

Fairy Queen (Evans & Reeves), sdbl. A charming new variety, greatly admired at

the fair. Soft pink sepal and tube and ivory white corolla. Bushy grower and good bloomer.

Falling Stars (Reiter, Sr.). Sepals are pale translucent scarlet, and the inner surface has a beautiful iridescence which sets off the glowing turkey-red corolla. The foliage is good, and the growth is quite weeping. A glowing flower, free blooming and a strong grower.

Fanfare (Reiter, Sr.). Represents the largest and finest of the trumpet flowers with amazingly rich new colorings. It has exceptional vigor and fine foliage and is good as a large background plant or climber.

Firefly (Niederholzer). Distinct by its almost luminous, vivid red corolla and sepals almost a self, medium size single flowers in great masses, flaming in full sun, tall grower.

Forget-Me-Not (Niederholzer), sgl. One of the most dainty, well shaped, medium-sized flowers. Very pale pink tube and sepals and pale blue corolla. Strong upright growth with mass of flowers for the longest season. Plant in shade for perfect color. Was highly praised at the Exposition Hall of Flowers.

Fulgens. A species from Mexico. Large, light green foliage with masses of long, narrow flowers of pale orange calyx, green tip-

ped sepals and vermilion short corolla. Very popular, fine for full sun.

Gartenmeister Bonstedt, sgl. A triphylla hybrid. Flowers glowing brick red with orange shading. Dark bronze red leaves, likes sun.

Glendale (Evans & Reeves), sgl. A strong tall-growing plant with a profusion of dainty coral-pink flowers. A novelty of great merit, will stand full sun.

Glory (Werle). A strong growing fuchsia with firm arching branches, exceptionally rich, clean, thick foliage. The single flowers are carried in the greatest possible profusion well out toward the end of the branches. They hold up particularly well even in open sun, and the blooming season is very long and continuous. The tube is pure crimson and the horizontal sepals are narrow and pointed. The single corolla is well formed and deepens from crimson at its base to deep tyrian rose. A very good doer even in a difficult position.

Golondrina (Niederholzer). Unique by its irregularly crinkled and frilled corolla, named golondrina for its long wide spread swallow wing sepals of 4 inch diameter. Tube and sepals rose madder, single corolla magenta, streaked light and dark edges, emphasized by crimson blotches. One of the most prolific bloomers.

G. Monk, dbl., sdbl. Produces an abundance



Sunset

of medium-sized flowers with fine purple-blue corolla and deep pink sepals and tube. A compact plant good for pot culture.

Grotesque (Niederholzer). Crimson sepals twisted, upright, rough inside, smooth outside, pure white corolla, double, loose, irregular with sharp lines of crimson; extra long stamens and a very short, almost hidden, pistil add to curious character. Very tall, strong, stiff branches.

Gypsy Queen, dbl. A very fine enormous flower with deep crimson calyx and rose-mauve corolla. Very vigorous plant, 6 feet or more.

Halloween (Dr. Lagan). Similar in growth to Cascade, very large flowers, light plum corolla, sepals white flushed pink, wonderful basket.

Hap Hazard, dbl. A large upright plant with well-shaped flowers of scarlet tube and sepals and deep purple corolla, petals with fine white edging.

Henri Poincare. To my mind one of the most beautiful fuchsias grown. The long violet-blue corolla forms a perfect bell, which is handsomely set off by pointed red sepals. By very little coaxing makes wonderful basket.

Heron, sgl. One of the best among the many red and purples. Produces a mass of good size flowers for a long period. Upright plants to 5 feet high.

Hugh Evans, sgl. A handsome trailing variety with long, single flowers of crimson and burgundy red. Useful for walls or banks or can be staked up. Fine for baskets.

Jules Daloges, dbl. Very popular for its extra large flowers with red calyx and violet-plum pale corolla with splashes of fine pink.

Kitty O'Day, dbl. Tube and sepals rose red. Corolla white washed and veined rose red. Petals beautifully cupped or rolled in edges. A handsome, large, very floriferous variety.

Lilac Queen, dbl. Small plant of bushy habit with medium size rose-lilac corolla and deep pink sepals and tube.

Little Beauty, sgl., sdbl. Dwarf compact bush, very free flowering, red calyx and lavender-blue corolla.

Lord Byron, sgl. A small plant with small flowers distinct by the very deep purple colored corolla; short, red tube and sepals.

Lustre Improved, sgl. Distinct among the many long white tubed ones. Medium size plant, waxy white, almost translucent tube and very brilliant orange-red corolla.

Macrostemma Alba. A species from Chile. Very large shrub or tree with small foliage and almost white blossoms in size of the Gracillis.

Mademoiselle (Reiter, Sr.). A bush fuchsia with the flowers and color of "Schneewitchen" or "Countess of Aberdeen." The plant is strong and vigorous and the blooms come in continuous profusion on the tips of



Margarita

every branch. The foliage is rather small but good and the canes are strong and firm and could be trained into superb tube specimens.

Margarita (Niederholzer), sgl. Very distinct novelty. Broad, upright carmine sepals and a short, bell-shaped orchid purple corolla with dark rose edging form a peculiar flower of great beauty. Extremely floriferous, large plant, and good foliage.

Marinka (Red Cup), sgl. Almost a self color with rosy scarlet corolla and crimson scarlet sepals. Semi-trailing but making a fine display when staked up.

Martha Werle (H. Werle), dbl. A medium-sized flower on a small plant growing in a window box and compelling constant praise by visitors to our nursery. The blooms are distinct from others in that line by a cyclamen purple corolla and bright red upright sepals. Very fine for low border planting and ideal for window boxes.

Mephisto (Reiter, Sr.). Another addition to the color range in the shrub class. A brilliant flower that shows off well on a grand plant and is identical in size to "Mademoiselle" but practically the entire flower is of deepest crimson.

Mme. Aubin, sgl. Vigorous grower with deep orange-pink corolla and soft salmon sepals.

Mme. Carnot, dbl. Very large, full double, pinkish-white corolla with red sepals and red tube.

Mme. Cornelissen, sgl. One of the most widely grown, small flowering red and white. Valuable for almost endless flowering and hardiness, grows to 10 feet high, forming fine trees.

Mme. J. Feuillet, sgl. Highly praised, but not much known. Has deep pink sepals and tube and white, heavily pink-flashed corolla.

Molesworth, dbl. Medium size, of perfect shape, scarlet tube and sepals and full double snowy white corolla. Branches pendant, fine for trailing or espalier.

Mother's Favorite, sdbl. Large flowers with bright scarlet calyx, and pure white corolla with fluffy petals, bronzy foliage, strong grower, very floriferous.

Mrs. Desmond, dbl. A beautiful mutation discovered by Mrs. Cassie Desmond of Soquel, Calif. The flowers are large and exquisite in every regard. Sepals rose-red inside, darker outside, the full corolla is amparo purple and finely veined. Vigorous plant with masses of blooms.

Mrs. Gideon Brown, dbl. Large, bluish-violet corolla, scarlet tube and sepals.

Mrs. Rundle, sgl. Very long white tube and very long pointed sepals of flesh color, with vivid orange corolla. A real beauty.

Mrs. Victor Reiter (Reiter, Sr.), sgl. Long tubed of Mrs. Rundle type with slender sepals creamy white with occasional faint rose or yellow-green tint; corolla is pure crimson, fading to creamy white at the extreme base. Considered to be the most perfect of all the white and red bicolors in this type.

Mrs. W. H. Ware, sgl. Sepals long reflexed white, flushed pink, corolla blue-violet, pink at base changing to beautiful red-violet in aging flowers. Tall and graceful.

Muriel, sgl. An old English variety of exceptional beauty, immense flowers with scarlet tube and sepals and long twisted rose corolla. By special training it may be grown to any shape, but is supreme for hanging basket. As such it was a sensation in the Hall of Flowers.

New Fascination (Niederholzer). A superior seed parent, larger, brilliant rose-pink, double corolla, gracefully loose sepals, vigorous grower and bloomer. Fine foliage.

Nonpareil (Pink Ballet Girl), dbl., sdbl. A very fine grower and most floriferous, good for basket, fine for espalier, and large standards by careful training. Ivory-pink calyx and pale purple-blue corolla.

Pacifica (Niederholzer). Extremely floriferous, large spreading plant with stiff branch-

es, crimson sepals upright, slightly twisted, corolla single and semi-double of orchid-purple, lighter at base and darker on edges with fine crimson veins. A truly distinct and worthwhile novelty.

Pasadena, dbl. A compact small plant of good habit with flowers of rose-pink calyx and rather loose snowy white corolla.

Patty Evans (Evans & Reeves), dbl., sdbl. A vastly improved Rolla. Waxy white, faintly pink calyx and full, long white corolla, vigorous in growth and very floriferous.

Pastel (Reiter, Sr.). This is an improvement of "Treasure Island" but slightly larger and paler, and with better foliage.

Pee Wee Rose (Niederholzer), sgl. A Macrostemma hybrid, 7 feet high with long willow branches and an abundance of beautiful medium-small flowers, almost self intense light rose color.

Pepita (Niederholzer), sgl. Vigorous as Macrostemma Alba, one of its parents, rose-pink tube and sepals, fine deep blue corolla. A charming little flower.

Pink Pearl, dbl. A real beauty in a tall, upright plant with masses of clear pink flowers almost self.

Pink Balloon (Niederholzer). Large, pink balloon-shaped buds, with snow-white double corolla.

Pride of Exeter, sdbl. Long corolla with large broad petals of deep rose lightly suffused violet, long, pointed reflexed sepals of light rose, tube white shaded pink.

Prince of Orange, sgl. A real gem of slow growth with deep orange-vermillion corolla and soft carmine tube with sepals of deep salmon.

Purple Bowl (Niederholzer). Luminous purple, single, bowl-shaped corolla and red sepals.

Purple Phenomenal, dbl. Of the many large double red and purples sold under that name there is just one outstanding for its superiority. It has been introduced by the late Mr. Abraham and this is the one we offer.

Rolla, dbl., sdbl. A very distinct variety with white corolla and tube and sepals of the very faintest pink.

Rosecroft. For its foliage called "Holly Leaf Fuchsia." Long, beautifully formed blossoms of striped, pink corolla, and long curved sepals of carmine.

Rose of Denmark, sgl. One of the best with corolla of pale rose shading to deeper rose at edge of petals, reflexed pale flesh sepals and tube.

Rose Pillar (Reiter, Jr.), sgl. A vigorous variety of an entirely new color in fuchsia, in

foliage and vigor resembling pink pearl. The flower is of clear Neyron rose color edged with a thin margin of geranium lake, shaped like Display but larger and less formal. A strong grower to make excellent pillar plant.

Rose Queen, dbl. A very distinct variety, vigorous grower with lovely light green foliage. Large flowers of clear violet, flushed lilac with rose shadings and bright red sepals.

San Francisco (Reiter, Sr.). A single and an absolutely distinct fuchsia in every way. In the field of weeping varieties it combines quality, freedom of bloom, exceptional foliage and clarity of color. The sepals are long and pale carmine-rose. The corolla is pure geranium lake.

Santa Monica, dbl. Valuable for its late blooming season, flowering profusely thru late fall. Bright red sepals and tube, corolla flesh-pink streaked cerise.

Scarlet Baby (Niederholzer). A most graceful single red and purple, very long carmine stamens and pistil, sepals are brilliant carmine curved up perfectly regular; corolla deep purple violet carmine at the base.

Scintillation, dbl., sdbl. Sepals long, reflexed, tyrian rose inside, darker outside,

corolla with edges of petals picoted and white of color. A strong grower.

Serratifolia. One of the finest species from Peru. Beautiful long flowers of striking colors, white and pale carmine tube, green tipped sepals and brilliant orange corolla.

Splendens. A species from Mexico. Bushy growth, flowers pale orange tube and sepals, red corolla. May be trained to 15 feet high or grown as basket variety. Will stand full sun.

Storm King, dbl. One of the old favorites with scarlet tube and sepals and waxy-white corolla with crimson veins at base of petals.

Sunset (Niederholzer), sgl. Without doubt one of the most distinct novelties. A fine grower, stiff branches forming a well-shaped bush, foliage excellent, tube and sepals pale pink, wide open corolla of brightest sunset color.

Surprise (Niederholzer), sgl. and sdbl. Pronounced to be one of the most precious little flowers, small but perfect in shape. Has all the vigor of *Macrostemma Alba* (one of its parents), and a wealth of bloom from early spring to late fall. Short, bright red tube, horizontal sepals and a short, slightly frilled hyacinth blue corolla.

Suzanne Pasquier, dbl. A fine new variety with fine foliage and large pointed buds opening to white with scarlet sepals.

Swanley Yellow, sgl. Extra long tube and sepals of light apricot and deep orange-pink corolla.

Thalia, sgl. A triphylla hybrid. Bronze green foliage and long orange-scarlet tube and short orange-red sepals and corolla, upright growth, 3 feet, likes full sun.

The Chief (Evans & Reeves), dbl. A novelty the name of which aptly describes this beautiful flower of dark rich violet with petals flushed cerise and the sepals of dark carmine.

The Doctor, sgl. Deep pink to deep rose corolla with long pointed sepals and tube of soft pink, very fine and showy.

Thomasina, sgl. Medium-sized flowers noted for the color of the sepals, very dark henna orange; tube and sepals are pale ivory pink.

Torpilleur, dbl. An old stand-by with good growing habit, has scarlet calyx and white loose corolla strongly veined and flushed with carmine.

Trailing Queen, sgl. A good old favorite for basket culture, medium size flowers with scarlet calyx and fuchsia red corolla.

Treasure Island (Victor Reiter), sgl. Sepals satiny Neyron rose with tip of pale green. Corolla shades from Neyron rose at the base to fuchsia pink of the palest hue, veined in deeper shade of Neyron rose.

Venus Victrix, sgl. Small, very distinct type with deep violet-blue corolla and white sepals delicately tinted pink.

White Wonder (Baake & Son), dbl. Claimed to be the most outstanding of all the double red and white fuchsias. The purest white corolla set in bright red sepals.

Wistaria (Niederholzer). Has been a sensation wherever shown. The name is fitting for the color of the bloom and much more so for the habit of growth. It is unique, literally growing like a wistaria climber, ideal for pergola or for basket. The bud is almost white with a very pale sap-green tip. The leathery inside of the sepals is tinged with phlox pink. The single corolla is mallow purple, oddly irregular, each petal on a long peduncle; in addition each sepal rolled up carries a miniature petal on its base.

THE AMERICAN FUCHSIA SOCIETY

publishes, for members only, a monthly bulletin offering a wealth of information and timely advice for growing fuchsias to perfection. Annual dues, per calendar year, One Dollar. Address: 405 Collingwood Street, San Francisco, California.

Tuberous Begonias... Selected Strains



Double Camellia

Tuberous Begonias are among the most beautiful garden plants. They are not cultivated as much as they deserve because they are comparatively unknown to the average garden lover.

They thrive under trees and in shady places, where other plants will not grow. Their lively colors brighten up the dull parts of gardens and they require but little care. The success that growers have is so gratifying that they find themselves planting many varieties.

Tuberous Begonias bloom from May through November and are among the few plants that flower so abundantly over such a long period of time. Their colorful blooms lend themselves to various uses as flower arrangements.

Culture of Tuberous Begonias . . . Tuberous-rooted Begonias require three things: shade, rich soil, and moisture. Shade is one of the necessities for their culture. If planted under trees, the branches of these trees should not be so low on the ground that they will interfere with free circulation of air.

Soil . . . Tuberous Begonias are surface feeders; their roots do not go down deeply but spread horizontally in the ground. Therefore, it does not matter what kind of soil you have, whether clay, rock, or hard loam; just select a shady place in your gar-

den where you would like to have these plants to grow, and procure enough soil to fill the space to a depth of six inches. The soil should be a mixture of old leafmold and barnyard manure in equal proportions. Add some peat and coarse sand; mix these ingredients together and your soil is ready to receive the plants or bulbs. The bulbs should be covered with one and a half inches of soil. Use same mixture for pots or baskets. Plants in pots or baskets should be given some liquid cow-manure about once a week after pot is rootbound. Outdoor plants should have a mulching of peat and bonemeal mixed, during the middle of July.

Moisture . . . Tuberos Begonias like moisture, both on their leaves as well as on their roots. Keep soil moderately wet. In July and August when it is hot and dry use garden hose with fine spray and apply for a few minutes over entire plant. The leaves of these Begonias help to support the entire plant, and when the humidity is down and the leaves are not moistened, you will find that the center flower will drop off, because the roots alone are unable to support it.

Tubers . . . If early flowering is desired, place tubers in flats with moistened peat and leaf mold (half and half) during January and February. Keep uniformly moist but not too wet in a warm place well lighted until three or four inches of growth develop, then plant in pots or shady position in open if desired. In autumn when the foliage turns yellow, withdraw water gradually and when all growth dies down entirely, take out tuber, wash off soil, dry in sunlight until thoroughly dry, then store in cool, dry place until time to plant again.



Glaucophylla Splendens (Fibrous Rooted Hanging Begonia)

BEGONIA GLAUCOPHYLLA SPLENDENS, FIBROUS—BRAZIL. (As illustrated above. A magnificent winter blooming trailing Begonia and a vigorous grower with waxy green foliage. Its flowers are brick red and variegated in bud, and are borne in clusters along the branches. Plants: 3-inch pots 35c; 4-inch pots 75c. Hanging Baskets: \$3.00 to \$6.00.

Double Camellia . . . Most popular of all Begonias due to its beauty and sturdiness. Is useful throughout many months of the year. Because of its sturdy, free-flowering habit, it is invaluable as a summer bedding plant. Colors: white, yellow, orange, pink, rose, scarlet, apricot, crimson, dark red, salmon, shell pink, salmon orange, pink salmon, red salmon, flame orange, flesh salmon, salmon rose, cardinal red, American beauty, apple blossom, crimson rose, apricot salmon, and blush.

Double Camellia Picotee Shades . . . These flowers have the same form as the Camellia although not quite as large. They are two-toned and edge of each petal is strongly pronounced by contrasting color. Colors: red picotee, rose picotee, apricot picotee, salmon picotee.

Double Rosebud Type . . . Flowers resemble a perfect rosebud. A very sturdy grower. Colors are in pastel shades, blush, pink, rose, flame salmon, light salmon, dark salmon, and white.

Fimbriata Plena or Carnation Type . . . A very pretty strain, the petals being deeply fringed. Colors: rose, pink, white, salmon, orange, scarlet, yellow, dark red, crimson rose, salmon red, blush, apricot, light salmon and dark salmon.

Narcissiflora or Daffodil Flowered . . . This flower resembles a daffodil and is very effective in the collection of begonias as it



Double Camellia, Picotee Shades



Hanging Basket Begonia Lloydii

is so different. Colors: red shades, salmon shades, and yellow shades.

Fascination—Crispa Marginata . . . This very attractive type has beautiful frilled petals with a border of scarlet and rose on a ground color of yellow or white.

Giant Frilled . . . An extremely beautiful type of begonia, the edges of the petals being deeply frilled, giving the flower a

unique charm. The colors are: crimson, scarlet, salmon, rose, pink, white, yellow and orange.

Crested or Bearded Single Begonia . . . A very interesting type of begonia, the crested growth on each of the four petals giving them a curious and fantastic appearance. Mixed colors only.

Giant Single Begonia . . . This type produces the largest flowers. Specimens sometimes measure 10 inches across. Colors: dark red, pink, white, rose, salmon and scarlet.

Begonia Lloydii or Basket Type . . . This type of begonia, as well as the Hanging Fuchsias, were among the most admired plants in the Hall of Flowers at the Golden Gate International Exposition. With their graceful hanging habit and great masses of blooms, they are adaptable to conservatories, patios and places where they will be protected from the wind. Colors: scarlet, rose, pink, orange, yellow, salmon, apricot, and white.

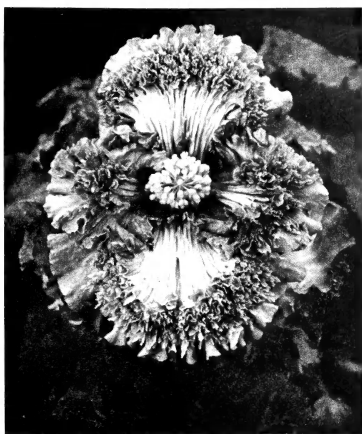
Begonia Martiana Grandiflora or Hollyhock type . . . A very interesting and pretty species, useful for conservatory decoration and particularly adapted to bedding. It is a tuberous kind with single rosy pink flowers growing from 3 to 4 feet in height indoors. The flowers are freely produced on long



Fimbriata or Carnation Type

spikes, very similar to a Balsam, the flowers clustering very closely to the stem. It is easily propagated from bulblets, which are freely produced at nearly every joint.

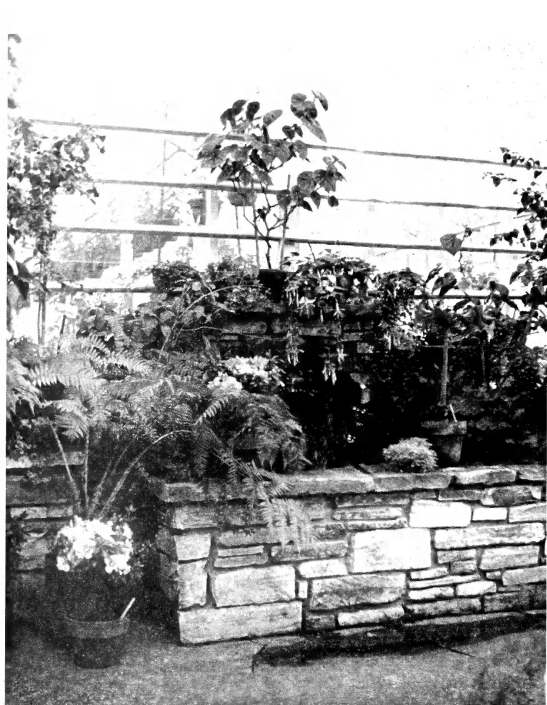
Prices on the foregoing varieties: Medium size bulbs 15c each, \$1.50 doz., \$10.00 per hundred; Large size bulbs 25c each, \$2.50 doz., \$15.00 per hundred; Extra large bulbs 50c each, \$5.00 per dozen. Bulbs available from December 15th to March 15th.



Crested or Bearded Single Begonia

During the flowering season, our nursery is visited by a large number of people who are delighted by the beautiful picture our outdoor beds present. Each variety in turn is distinctly different and is a study in beauty in its own right. Our Tuberous Begonias are grown from carefully selected seeds, and with proper care will develop into larger and more sturdy plants. Advice on the care of Begonias cheerfully given.

Join the **American Begonia Society**. Descriptive bulletins on culture of Begonias are issued monthly. Memberships \$1.00 per year. American Begonia Society, 1050 East 19th St., Long Beach, California. **San Francisco Branch**, 1060 Francisco St., Paula Schoenholz, President; Harry O'Donnell, Secretary, 1575 Thirty-First Avenue. Meetings: First Wednesday each month, 8 P. M.



Cozy Nook in Our Hall of Flowers